

Worldflow[®]

PIPES & FITTINGS

Ideal For

Hot & Cold Water

Application



BRINGS OUT
The Best

UPVC, CPVC, SWR & AGRI
PLUMBING PIPES & FITTINGS





COMPANY PROFILE

Hari Om Polyplast

Flagship Brand : *Worldflow* 

Hari Om Polyplast is a leading manufacturer of high-quality piping solutions in India. Under our flagship brand, **WorldFlow Pipes and Fittings**, we deliver a wide range of UPVC, CPVC, SWR, and COLLUMN pipes & FITTINGS designed for various industries, including plumbing, agriculture, and infrastructure. With a focus on innovation, sustainability, and customer satisfaction, our state-of-the-art manufacturing processes ensure superior quality and durability, making us a trusted choice for reliable piping solutions.

VISION STATEMENT

At Hari Om Polyplast, we aspire to be a global leader in providing cutting-edge, eco-friendly piping solutions that redefine industry standards for quality, innovation, and sustainability. Our vision is to create long-lasting, durable products that meet the diverse needs of customers across residential, industrial, and infrastructure sectors, ensuring efficient water management and seamless fluid transportation systems.

We are committed to leveraging advanced technology and sustainable practices to deliver products that not only exceed customer expectations but also contribute to the conservation of resources and environmental protection. By fostering a culture of continuous improvement and innovation, we aim to drive progress within the plumbing, agriculture, and construction industries, both locally and globally.

Our ultimate goal is to be the most trusted and preferred partner for piping solutions, recognized for our unwavering commitment to reliability, innovation, and customer satisfaction while making a positive impact on communities and the environment for future generations.



MANUFACTURING INFRASTRUCTURE

- **Factory Layout & Machinery:** Ensure the manufacturing unit is equipped with high-end machinery that supports the production of **WorldFlow Pipes and Fittings**.
- **Warehousing and Inventory Management:** An efficient warehouse layout for raw materials and finished goods. Implement an automated inventory management system to track stock levels, and raw material consumption, and forecast demand.
- **Quality Control Laboratory:** Set up an in-house lab for quality testing, ensuring every product meets industry standards.
- **Sustainability and Waste Management:** Integrate eco-friendly practices to manage waste during production and ensure energy-efficient operations.

DOMESTIC AND INTERNATIONAL REACH

Domestic Reach

- Wider Distribution Network
- Localized Marketing
- Government Projects
- Retail Expansion

International Reach

- Export Partnerships
- Global Certifications
- Trade Fairs & Exhibitions
- E-commerce for Global Buyers
- Localized Compliance



Trust Us By



Worldflow[®]
PIPES & FITTINGS

SWR
PIPES & FITTINGS



PRODUCT INTRODUCTION

WorldFlow SWR Pipes and Fittings are engineered for efficient drainage of soil, waste, and rainwater. Made from premium-quality uPVC, they provide a durable, corrosion-resistant solution for residential, commercial, and industrial plumbing systems. With easy installation and leak-proof performance, they ensure a hygienic and eco-friendly drainage experience.

PRODUCT SPECIFICATION

- **Material:** High-grade uPVC, non-corrosive, and recyclable.
- **Standards:** IS 13592 (Pipes), IS 14735 (Fittings).
- **Sizes:** Outer diameters from 40 mm to 200 mm.

Types:

- **Type A:** For venting applications.
- **Type B:** For soil and waste drainage.
- **Lengths:** Available in 3m and 6m with socketed ends.
- **Joining System:** Push-fit (with rubber ring) or solvent weld for leak-proof joints.

Features:

- Smooth interiors to prevent clogging.
- UV-stabilized for outdoor durability.
- Lightweight for easy handling.

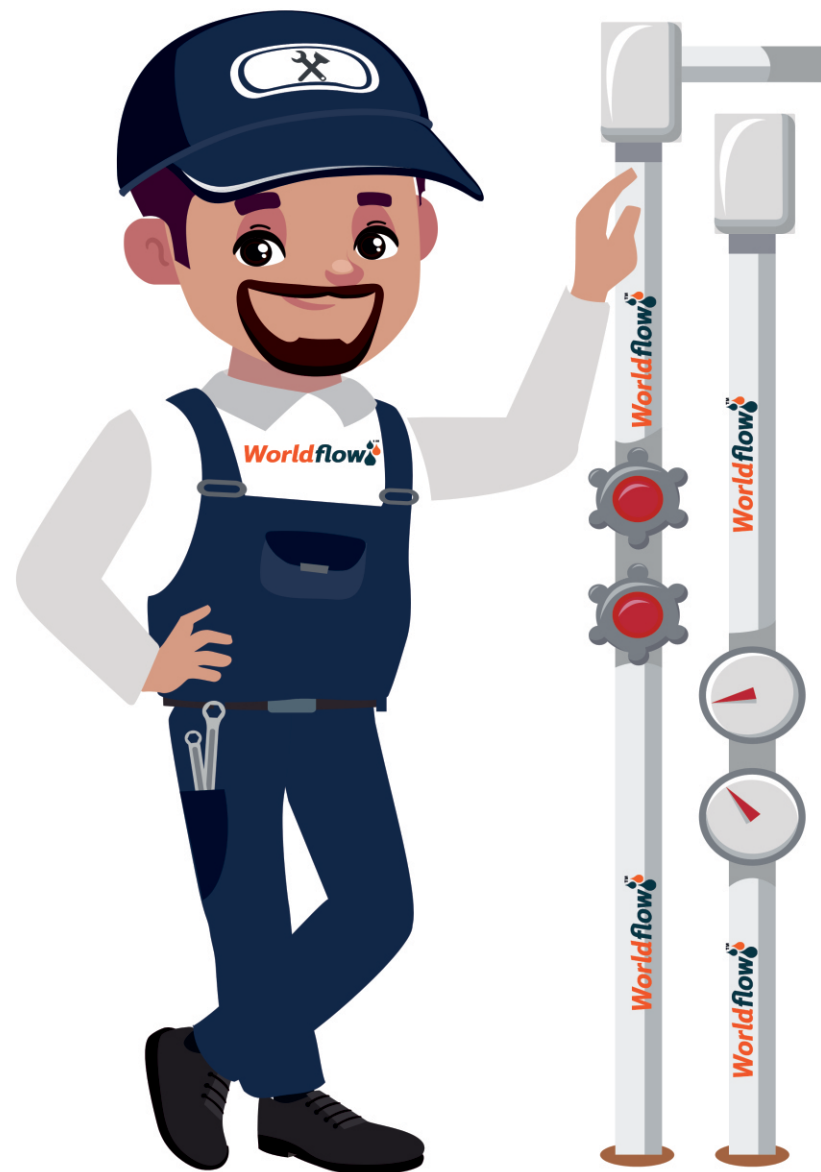


USE OF PRODUCT

- **Rainwater Drainage:**
- **Ventilation:**
- **Rainwater Harvesting:**
- **Commercial & Industrial Applications:**

SAFTY TIPS

- **Installation:** Ensure proper alignment of pipes and fittings to prevent leaks.
- **Handling:** Avoid dragging pipes on rough surfaces to prevent scratches or damage.
- **Joining:** Use appropriate solvent cement or push-fit rings for secure joints.
- **Load Management:** Avoid stacking pipes and fittings beyond recommended limits.
- **Temperature Range:** Use within the recommended range (-5°C to 60°C) for optimal performance.
- **Regular Maintenance:** Periodically inspect and clean the system to ensure proper functionality



TYPE - A



SIZE IN MM	Weight Per Pipe (KG)
75	1.800
90	3.400
110	7.450

TYPE - B



SIZE IN MM	Weight Per Pipe (KG)
75	-
90	-
110	-

PIPES (SELFIT) AS PER IS: 13592:2013



SIZE IN MM	Weight Per Pipe (KG)
75	-
90	-
110	-

PRICE LIST

SWR-11 AS PER ASTM D2846

BEND



SIZE MM	PACKING
75	60
90	64
110	40

DOOR BEND



SIZE MM	PACKING
75	48
90	56
110	32

BEND 45*



SIZE MM	PACKING
75	80
90	100
110	56

SINGLE TEE



SIZE MM	PACKING
75	72
90	45
110	24

DOOR SINGLE TEE



SIZE MM	PACKING
75	50
90	36
110	24

COUPLER



SIZE MM	PACKING
75	100
90	100
110	68

CLEANASING PIPE WITH DOOR



SIZE MM	PACKING
75	82
90	
110	30

SINGLE Y



SIZE MM	PACKING
75	30
90	
110	20

PRICE LIST

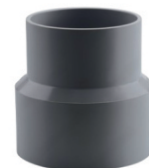
SWR-11 AS PER ASTM D2846

DOOR Y



SIZE MM	PACKING
75	25
90	
110	16

REDUCER



SIZE MM	PACKING
110 X 75	60

REDUCER TEE

SIZE MM	PACKING
110 X 75	30
90 X 75	45

REDUCING TEE WITH DOOR

SIZE MM	PACKING
100 X 75	24
90 X 75	

P-TRAPS



SIZE MM	PACKING
110 X 110	17
110 X 125	14

Q-TRAPS



SIZE MM	PACKING
110 X 110	12
110 X 125	

S-TRAPS



SIZE MM	PACKING
110 X 110	12
110 X 125	12

NAIL CLAIMP METAL



SIZE MM	PACKING
75	
110	

PRICE LIST

SWR-11 AS PER ASTM D2846

VENT COWL

SIZE MM	PACKING
75	348
110	144

DOOR CAP



SIZE MM	PACKING
75	400
110	200

JALI



SIZE MM	PACKING
75	-
110	400

RUBBER RING



SIZE MM	PACKING
75	1900
110	1000

PP RING

SIZE MM	PACKING
75	-
110	-

PIPE CLIP



SIZE MM	PACKING
110 X 110	12
110 X 125	

Terms And Conditions:

1. All Taxes And Other Levies Will Be Charged Extra As Applicable.
2. Prices Are Ex-Factory.
3. Any Disputes Are Subject To Rajkot Jurisdiction Only.
4. Warranty Is Not Application Of Using With Other Combination With Any Other Brand Make Of Pipe, Fittings/And Solvent
5. Payment 100% Advance
6. In Case Of Transport Damaged Goods Will Be Not Return.

FITTINGS RATE

Plain SWR Selfit:

Brass SWR Wilfit:

PIPE RATE

ISI SWR Pipe:

Per Kg. Rate:

BRINGS OUT
The Best



Worldflow[®]

PIPES & FITTINGS

MFG BY:-

WORLDFLOW PIPES & FITTINGS

✉ www.worldflow8848@gmail.com | 🌐 www.worldflow.in

📍 Khodal Ind. Area, Plot No. 13, 8B National Highway, Virva, Rajkot. (Gujarat)



Distributor & Dealer

